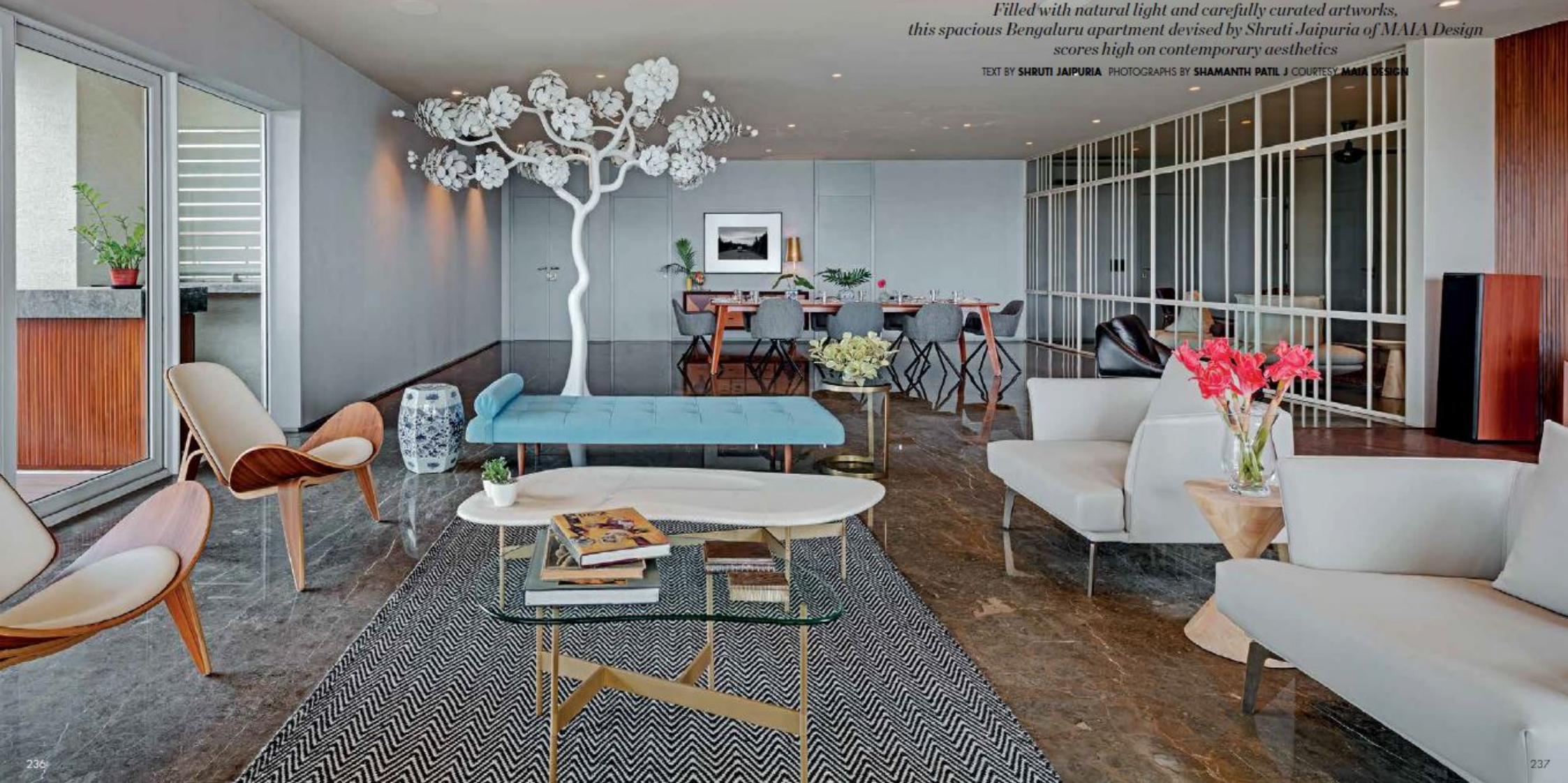


The tree of life, created by artist S Gopinath, is the focal point of the living room. Each ceramic leaf is fixed onto the branches with copper wires while the trunk and branches are composed of fibreglass. The adjacent blue diwan is sourced from Abaca. Curved wooden seaters and leather clad armchairs from Defurn and unique coffee tables from AKFD fashion a comfortable seating area

# CRAFTED FOR COMFORT

*Filled with natural light and carefully curated artworks, this spacious Bengaluru apartment devised by Shruti Jaipuria of MAIA Design scores high on contemporary aesthetics*

TEXT BY SHRUTI JAIPURIA PHOTOGRAPHS BY SHAMANTH PATIL J COURTESY MAIA DESIGN







The design has been kept simple, light and airy in order to emphasise clear vistas of the urban landscape

*Above* In the living area, the grey Roche Bobois sofa is upholstered in chenille fabric. A burnished brass IC floor light from Flos illuminates the corner. *Right* In the same room, a painting by LS Singh, representing the tree of life, is displayed on the wall finished with polished teak wood slats. The teak and cane cabinet was custom made by MAIA Design to conceal the music system. A red lacquered bowl from Sri Lanka matches the overall tone of the room, including the 19th century Kurdish rug





A mild steel and glass screen separates the dining area from the informal living space without interrupting the flow of light. This space was envisioned as an uncluttered zone with room for a lot of movement. The stained teak wood table, accompanied by chairs from Iqrup+Ritz, was designed by MAIA Design and crafted by Smith Interiors. A metallic light fixture from Santa Handa and eccentric sculpture by artist Venkat Bothsa rest on a customised console from Alankaram. A photograph taken by the client's son on his travels to Banff, Canada, completes this setting







When I first met the Golchhas, they told me they wanted a simple, clutter free house that still felt luxurious in its simplicity. Shruti and Gautam already had a beautiful Sri Lankan style abode they lived in with their two children and pet dog. Although gorgeous, it was a little cramped and dark. They needed more space and lots of natural light. This apartment is located on the 15th floor of a high rise, in the centre of Bengaluru. What sealed the deal was that the flat opened out to beautiful panoramic views of the city from all corners, including the kitchen and bathrooms.

The 4,500 sq ft residence has a minimal, contemporary aesthetic, but one that is rooted in a timeless, warm sophistication. The design has been kept simple, light and airy in order to emphasise clear vistas of the urban landscape. The focal point is a large, 9.5 ft tall ceramic tree by artist S Gopinath, that was commissioned for this project. Fascinated by the tree of life, the client selected other artworks following the same theme across the space by artists Madan Meena, Sunit Das, LP Singh, among others and a few Pichwais too. There are many recreational corners in the apartment – the ledge near the window doubles up as a bar, a place for the children to play board games and do their homework.

The homeowners are understated and detail oriented, with an interest in art and design. This residence allows them to start their journey of self-expression. It provides them with enough warmth to call this space a home, yet allowing ample room for them to constantly add collectibles and memories over time. ♦

*Above* The teenage son's bedroom was planned as a simple space where he could practise his guitar while enjoying the panoramic vistas of the city. His love for grey and caati is evident in the decor. Striped bed linen from Muji and neutral curtains from Drapes Avenue create a subtle nautical inspired theme that is further reinforced with the map artwork on the wall. A powder coated aluminium side table from Stories holds tiny succulents and his book collection. *Right* This multipurpose corner, composed of a statuario marble ledge with wood and leather chairs, serves as a coffee bar as well as a nook for their children to play board games. It receives plenty of sunshine from the skylight above and floor to ceiling windows that offer an endless view of the urban landscape beyond.

